

7/8" Corrugated

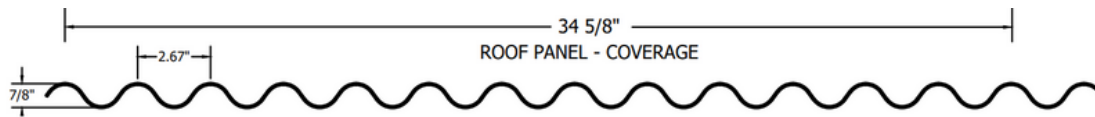
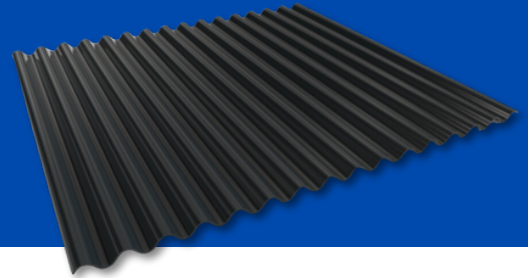
7/8" Corrugated

7/8" Corrugated

**THROUGH FASTENED
METAL PANEL SYSTEM**

trueTM
METAL SUPPLY

**metal roofing
made easy[®]**



**Choose from
a variety of
color options.**

THE OVERVIEW

With its distinctive sine-wave pattern, the 7/8" Corrugated Metal Panel offers versatility, suitable for roofing or wall applications, as well as for vertical or horizontal installation.

Installation of the through fastened corrugated panel is straightforward on either a solid substrate or open framing. Known for its exceptional structural integrity, this panel is engineered to withstand the elements, ensuring longevity and durability.

THE SPECS

- 26ga Standard; 24ga Available
- 34.67" net coverage
- 7/8" rib height
- 1:12 minimum slope
- Dura Coat WeatherXLTM Crinkle PVDF HYLAR 5000[®] Finish
- Also available: Bonderized, A606, and Galvalume Plus

THE BENEFITS

- Panel Length Cut to Specification
- Install on Solid Substrate or Open Framing
- Can be used for roofing or wall applications
- Can be installed vertically or horizontally in wall applications

**LIFETIME
WARRANTY**

limited lifetime warranty on
painted metal panel coatings.

www.truemetalsupply.com