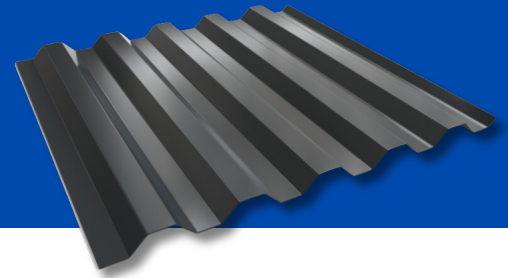


7.2 Box Rib

THROUGH FASTENED
METAL SIDING SYSTEM

trueTM
METAL SUPPLY

metal siding
made simpleTM



Choose from
a variety of
color options.

THE OVERVIEW

The 7.2 Box Rib Steel Siding panels boast a robust, structural build ideal for wall and roofing installations. With exposed fasteners and ample coverage, the 7.2 Box Rib is adaptable for both horizontal and vertical siding setups.

Installation of the 7.2 Box Rib panel is quick and easy on either solid substrate or open framing. Its contemporary industrial appearance adds aesthetic appeal to any project, making it a tastefully crafted panel profile.

THE SPECS

- 26ga Standard; 24ga Available
- 36" net coverage
- 1.5" rib height
- Dura Coat WeatherXLTM Crinkle PVDF HYLAR 5000[®] Finish
- Also available: Bonderized, A606, and Galvalume Plus

THE BENEFITS

- Panel Length Cut to Specification
- Install on Solid Substrate or Open Framing
- Can be used for wall or roofing applications
- Extremely strong and can be used in structural applications

**LIFETIME
WARRANTY**

limited lifetime warranty on
painted metal siding coatings.

www.truemetalsupply.com