

# 7/8" Corrugated

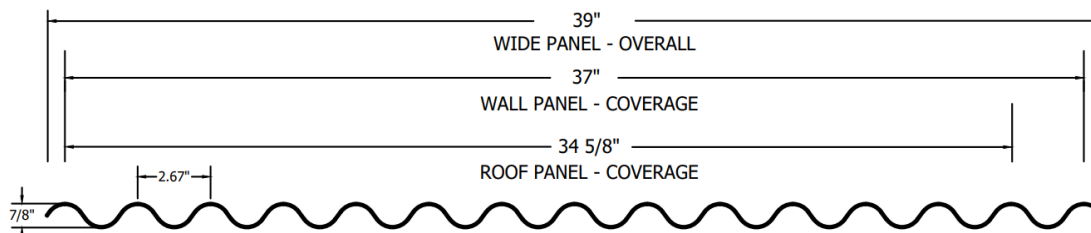
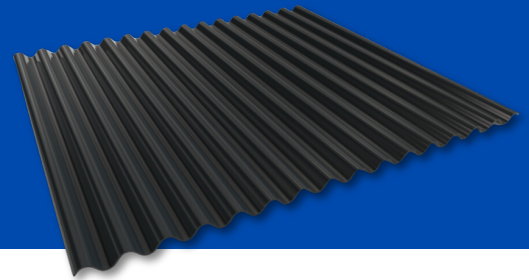
# 7/8" Corrugated

# 7/8" Corrugated

**THROUGH FASTENED  
METAL PANEL SYSTEM**

**true**<sup>TM</sup>  
METAL SUPPLY

metal roofing  
made easy<sup>®</sup>



**Choose from  
a variety of  
color options.**

## THE OVERVIEW

With its distinctive sine-wave pattern, the 7/8" Corrugated Metal Panel offers versatility, suitable for roofing or wall applications, as well as for vertical or horizontal installation.

Installation of the through fastened corrugated panel is straightforward on either a solid substrate or open framing. Known for its exceptional structural integrity, this panel is engineered to withstand the elements, ensuring longevity and durability.

## THE SPECS

- 26ga Standard; 24ga Available
- 34.67" net coverage
- 39" panel width
- 7/8" rib height
- 1:12 minimum slope
- Dura Coat WeatherXL<sup>TM</sup> Crinkle PVDF HYLAR 5000<sup>®</sup> Finish
- Also available: Bonderized, A606, and Galvalume Plus

## THE BENEFITS

- Panel Length Cut to Specification
- Install on Solid Substrate or Open Framing
- Can be used for roofing or wall applications
- Can be installed vertically or horizontally in wall applications

**LIFETIME  
WARRANTY**

limited lifetime warranty on painted metal panel coatings.

[www.truemetalsupply.com](http://www.truemetalsupply.com)